



## OEM Precision Aluminum Alloy CNC Machining Metal Parts Prototyping Pins

Our Product Introduction

for more products please visit us on [cnc-metalmachining.com](http://cnc-metalmachining.com)

### Basic Information

- Place of Origin: Shenzhen China
- Brand Name: Xiange
- Certification: ISO9001
- Model Number: CNC-Metal-14
- Minimum Order Quantity: 1 pcs
- Price: USD \$0.1-\$5
- Packaging Details: Carton, Plastic cargo
- Delivery Time: 7-10 days
- Payment Terms: T/T, Western Union, MoneyGram
- Supply Ability: 10000 pcs per month



### Product Specification

- Type: Turning, Milling, Etching / Chemical Machining, Laser Machining, Broaching
- Cnc Machining Or Not: CNC Machining, CNC Machining Pin
- Material Capabilities: Aluminum, Stainless Steel, Brass, Copper, Hardened Metals
- Process: Turning, Grinding, Milling, CNC Machining, Bending, CNC Milling
- Surface Treatment: Anodizing, Ni/Cr/Zinc Plating, Heat Treatment, Black Oxidation
- Application: CNC Automotive Parts, CNC Metal Parts Services Factory Industrial, Medical Equipment, Automotive, Household, Engineering
- QC System: 100% Inspection Before Shipment, Third Party Inspection
- Services: OEM ODM, CNC Machining, 3d Printing Service, Customized OEM, Design, Cnc Precision Parts Cnc Machining Parts Small Metal Parts Gear



### More Images



## Product Description

### Custom Precision Metal Parts ,Metal Pins Machining, Aluminum Alloy CNC Steel Machining Pin Machine Parts Service Factory

#### What We Can Provide

**Xiange Technology** was established in 2003, Xiange is a manufacturer specialized in all kind of 3D printing parts, high accuracy CNC Metal Machining parts, Metal sheet fabrication and Stamping/Casting accessories. "Honesty" "Quality" "Service" "Gratitude" are our company culture.

We have 2000 sq. ft factory including 3D printing equipment, CNC milling/turning machines, Automatic lathe machines, Stamping/bending machines, Laser cutting machines. We services 650+ customers all over the world.

Our CNC machining products include:

- CNC machining motor parts
- CNC machining drone parts
- CNC automotive parts
- CNC machining motor parts
- CNC machining robot parts
- CNC medical parts
- Heat sink machining
- Metal bushing machining
- Metal Pins machining
- Metal Nut machining
- Metal flange machining
- CNC fabrication parts
- Metal spacer machining
- Etc.

<b>Our advantages</b>	<ol style="list-style-type: none"> <li>1. Fast prototyping</li> <li>2. 18 years' experience of CNC machining and stamping services</li> <li>3. Small order acceptable</li> <li>4. ISO9001/ISO14001/ISO-TS16949 certified factory</li> <li>5. Quality assurance system</li> <li>6. Quick production and delivery</li> </ol>
<b>Our equipments</b>	<ol style="list-style-type: none"> <li>1. CNC gantry milling machine, 2500x1300mm</li> <li>2. CNC machining centers, drill and tap, engraving machine</li> <li>3. CNC turning centers</li> <li>4. Swiss lathes</li> <li>5. Hydraulic stamping machines</li> <li>6. Tapping machines</li> <li>7. EDM wire cutting , drilling machine</li> <li>8. Molded plastic injection machines</li> <li>9. 3-dimensional measuring instruments, projectors, test machines</li> </ol>
<b>Materials applicable</b>	Aluminum, Copper, Stainless Steel, Titan Alloy, Hard Alloy, Teflon, Nylon, PEEK etc.
<b>Surface</b>	Anodize, polishing, brushing, gold/silver/nickel plating, passivation, dacromet etc
<b>Tolerance</b>	+/- 0.005 to +/-0.01mm
<b>Order quantity</b>	Small order acceptable
<b>Our services</b>	Drilling, Laer Machining, Milling, Other Machining Services, Turning
<b>Quotation against</b>	2D drawings (PDF, JPG, DWG), 3D drawings (STP, IGS) or sample
<b>Lead time</b>	<ol style="list-style-type: none"> <li>1. Prototyping 3-5 days for CNC machining parts,</li> <li>2. Tooling -15-25 days</li> <li>3. Production - depends on order quantity.</li> </ol>

We have been manufacturing precision checking fixtures, casting parts, CNC machined parts, sheet metal parts, metal pressed parts, metal screws and metal clips and spinning parts for a wide range of industry, including automotive, aerospace, medical, electronics, telecommunication, construction, marine, lighting system, and energy industries.

We offer one-stop solution from custom design, fabrication, welding, surface treatments to final assembly. Our sustainable, efficient and fast services, can meet the diverse needs of multiple industries from prototypes, trial run, to high-volume, long-run production.

Monthly Turnout Reaching 800,000 Pieces We have Precision CNC machines, Lathes, casting machines, punches, grinders, polishing machines, etc. These enable we have the capacity to produce up to 800,000 metal parts, hardware parts and associated mold tools per month. This ensures we can complete orders timely. We can help with the design and concept, and choice of raw materials used.

We offer products with surface treatment of polishing, brushing, sand blasting, anodizing, plating, power coating, painting, laser engraving, etching, silkscreen, etc.

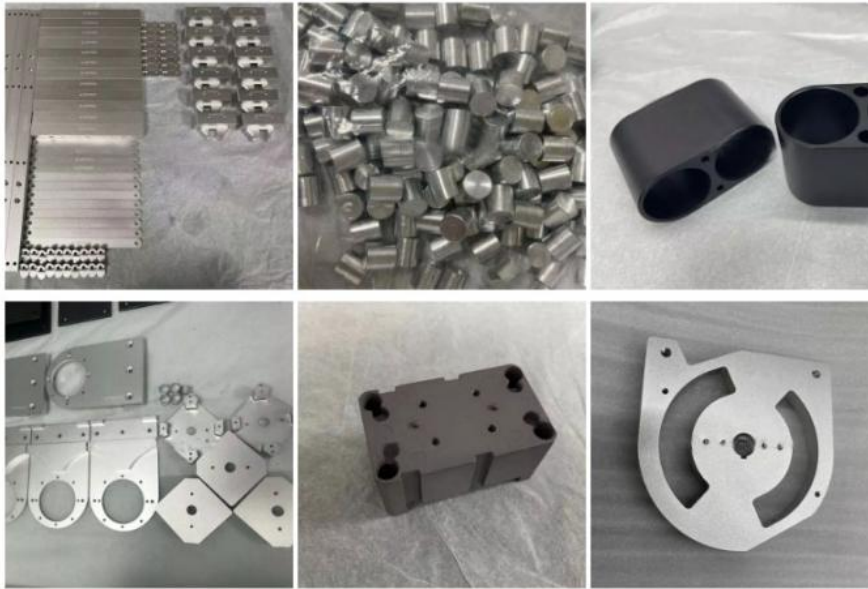
Quality guarantee (Audited by SGS-CSTC) We have CMM (3D coordinate measuring machine) and 2.5D measuring projector to

measure large and complicated parts, have gauges, calipers, micrometers for precision small parts. Our engineering and manufacturing team are experienced, efficient and dedicated, and we have a closed-loop quality control system, all of these enable us to guarantee our products' quality.

Quality Control Standards	
To consistently exceed customer expectations, quality control and assurance is achieved through	
• Comprehensive written procedures and policies	• Fully equipped inspection department
• Detailed records of incoming raw material	• Consistent calibration and labeling of inspection tools
• Optional XRF analysis reports	• Designated areas for non-conforming parts
• Analysis of root cause of non-conformances	• Staff members being strongly encouraged to suggest
• Test tools: 3D projectors, ordinary projectors, all kinds of accurate measuring tools, Salt spraying testers, high temperature resistant testers, low temperature resistant testers, etc	improvements in methods, materials and suppliers

## Product Category





## Equipments&Facilities

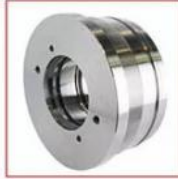
High Speed Punching Machine	CNC Punching Machine	CNC Bending Machine
Laser Cutting Machine	CNC Wire EDM	Sheet Metal Shearer
Hydraulic Deep Drawing Machine	CNC Machining Center	Polishing Machine
Welding Machine	Wire Drawing Machine	CNC Lathe
Leveling Machine	Precise Die Casting Machine	Grinding Machine

## Metal Working Service

CNC Machining	Laser Cutting	Custom Metal Welding	CNC Metal Bending
CNC Turning	Rapid Prototyping	Sheet Metal Fabrication	Metal Deep Drawing
CNC Milling	Casting&Forging	Surface Finishing	Metal Punching

## Custom Metal Solutions

Candle Holders/Cups	Medical Containers	Metal End Covers	Mobile Phone Shells
Crafts Stamping Parts	Tablewares	Aluminum Lids	Cabinet Enclosures
Lighting Stamping Parts	Filters/Strainers	Cosmetic Caps	Furniture Accessories
Metal Brackets/Stands	Protective Shields	Essential Oil Caps	Door&Window Fittings
Electronic Components	Sheet Metal Panels	Perfume Caps	Shafts/Sleeves/Gears
Electrical Connections	Cooling Fins	Wine Bottle Caps	Fasteners
Metal Structures	Metal Contact Clips	Jar Caps	Machinery Parts
Car Spare Parts	Motor Spare Parts	Glass Bottle Caps	Pipe Fittings/Elbows







## Related Products

### CNC Machining Parts





## Surface Treatment

	Surface Treatment	Material available	Note
	As machined	All metals e.g aluminum, steel	~125 RA $\mu\text{in}$ (3.2 RA $\mu\text{m}$ ). Minor tool marks will be visible on the part.
	Smoothed	All metals+Plastic e.g aluminum, steel, nylon, ABS	Parts are machined at a lower feed rate in order to achieve a surface roughness of ~62.5 RA $\mu\text{in}$ (1.6 RA $\mu\text{m}$ ). Surface roughness can be decreased up to ~32 RA $\mu\text{in}$ (0.8 RA $\mu\text{m}$ ) upon request.
	Bead Blasted	All metals e.g aluminum, steel	Bead blasting adds a uniform matte or satin surface finish on a machined part, removing all tool marks. Mainly used for aesthetic purposes.
	Anodized Clear or Color	Aluminum and Titanium alloys	Anodizing adds a thin, hard, non-conductive ceramic coating on the surface of aluminum parts, increasing their corrosion and wear resistance. Available in a variety of colors.
	Anodized Hardcoat	Aluminum and Titanium alloys	Hardcoat anodizing produces a thicker ceramic coating providing excellent corrosion and wear resistance. for functional applications.
	Powder Coated	All metals e.g aluminum, steel	Powder coating adds a thin layer of strong, wear and corrosion resistant protective polymer paint on the surface of a part. Available in a large range of colors.
	Electropolished	Metal+plastic e.g aluminum, ABS	Electropolishing is an electrochemical process used to polish, passivate and deburr metal parts. It is useful to reduce surface surface roughness.
	Brushing	All metals e.g aluminum, steel	Brushing is produced by polishing the metal with grit resulting in a unidirectional satin finish.



# WHY CHOOSE US

## 9 service advantages



### Factory self-operated

Our factory is self-operated without intermediary price difference, price concessions



### Quality Assurance

Each product can be delivered only after passing the inspection, and the quality is assured



### On time delivery

Produce immediately after finalization, and deliver on time at the appointed time



### Professional service

We are professional in every link from image recognition to production



### Drawing confidential

Strict drawing management system eliminates the risk of leakage and protects your interests



### Private custom

Create your own products, what do you need we do for you



### Professional proofing

Professional and efficient technical workers support samples or customized drawings



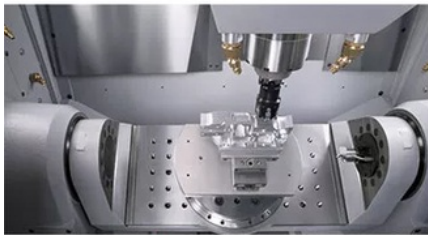
### Shortened lead time

The manufacturer directly arranges production to shorten the transportation cycle and shorten the delivery time



### Dedicated docking

From entering the store to receiving the goods, we provide you with exclusive personal services



## High Precision

5-Axis CNC & Imported machines with accuracy  $\pm 0.02-0.10\text{mm}$



## Fast Lead Time

Multiple CNC machines, skillful workers, guarantee fast lead time



## Strictly Confidential

We will protect the customers' design and the customer can request a confidentiality agreement



## Quality Inspection

We have a strict quality inspection process to ensure the quality of our products



# Factory Equipment



WEDM



Milling Machine



CNC Wire Cut



Coordinate measuring machine



CNC Bending Machine



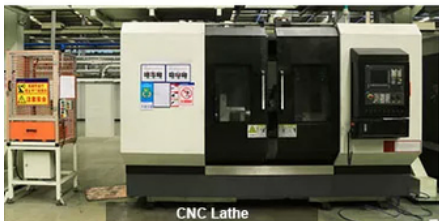
Hydraulic Press Machine



SLS/SLA Machine



5-Axis CNC



CNC Lathe



Laser cutting Machine



CNC Punching Machine



Injection Molding machine



## FAQ

### Why are you choose us ?

- 1) We have our own factories, quality can be controlled seriously.
- 2) We Specialize in manufacturing about 21 years.

- 3) We have professional testing department and testing equipment.
- 4) We have 12 rich experience engineers & 20 senior technicians.
- 5) Timely delivery and excellent service.
- 6) We believe Reasonable price = High quality + Best service.

**QC System:**

- 1) Confirmed all drawings with customer and design the production way.
- 2) Checking the raw material before coming into our warehouse.
- 3) Confirmed the samples, reports of material and specs with customer.
- 4) Checking the process, machine, and other details in the production line.
- 5) Checking every products before packing them.
- 6) Checking the package before delivery.

**Q1: Could you give me your best price?**

A1: Of course yes, we are a professional manufacturer, so we could supply the best price without many middlemen.

**Q2: If my quantity is very small, could you do my products?**

A2: Yes, we can. Do not worry about the quantity. We will provide different production ways based on your quantity.

**Q3: How long would the delivery time?**

A3: It is based on all of your requirements about the products.

**Q4: How can you guarantee the quality?**

A4: We have a powerful QC team to control the quality in every production process. We believe the best quality is our enterprise life.

That's why we have lots of big group companies.

**Q5: I want to buy your products, how can I make the payment?**

A5: We can accept the T/T, western union.



**Shenzhen Xianheng Technology Co.,Ltd**



0086-13682614486



shawn@xianheng-tech.com



cnc-metalmachining.com

Room 8-1409, Xingji jiyuan building 8-9#, HongXing community, Songgang street, Bao'an District, Shenzhen City China