



Custom Stamping Deep Drawn Sheet Metal Stainless Steel Cut Aluminum Service

Our Product Introduction

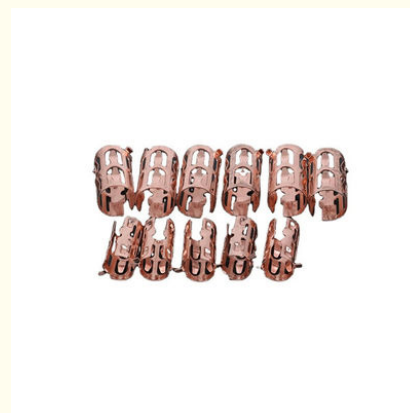
Basic Information

- Place of Origin: Shenzhen China
- Brand Name: Xiange
- Certification: ISO9001:2015
- Model Number: DP-XG-021
- Minimum Order Quantity: 1 pcs
- Price: USD \$0.1-\$1.99
- Packaging Details: Carton, As Customers' packaging requirements
- Delivery Time: Samples 7-10 days, Mass production 20-25 days
- Payment Terms: T/T, Western Union, MoneyGram
- Supply Ability: 10000 pcs per week



Product Specification

- Material Capabilities: Stainless Steel, Aluminium, Copper, Brass
- Products: Deep Drawn Sheet Metal Manufacturer
Custom Stamping Metalwork Stainless Steel Cut Aluminum Deep Drawing Service
- Process: Metal Sheets Fabrication, Welding Cutting
Punching Stamping
- Crafts Manship: Metal Sheet Fabrication, CNC Stamping, CNC Bending, Welding
- Drawing Formats: DWG, DXF, STEP, IGS, AI, PDF, JPG, SKP, Draft.
- Applications: Residential / General-Purpose
- Highlight: **Custom Stamping Deep Drawn Sheet Metal, Welding Aluminum Deep Drawn Sheet Metal**



More Images



Product Description

What We Can Provide

Deep Drawn Sheet Metal Manufacturer Custom Stamping Metalwork Stainless Steel Cut Aluminum Deep Drawing Service

Xiange Technology has a wonderful team which focusing on product development, drawing design, quality control, inspection. In order to match the company culture of Service and Honesty. We have established a set of strict company operation procedure.

We have multiple CNC machines, like CNC Machining Centers, CNC Milling Machines and CNC Turning Lathe Machines that can process precision Customized CNC Machining Accessory.

We have been operating under the ISO9001 quality system, focusing on the development and production of aluminum alloy product enclosures for our customers. The star products are aluminum keyboard, laptop/tablet computer, UAV body, car navigation, audio, smart home and other high standard aluminum alloy. At present, our customers include German customers, Japanese customers and other domestic and overseas customers who has high quality requirements.

Our Advantages

- 1.Small details make big difference. We promise:All the parts from our company have no sharp edge. All dimensions are controlled according to your drawings. Every product will be fully inspected and carefully packed to prevent the bump and rust in transit.
2. The craftsmanship of all parts we machined is controlled rigorously, Every product has its own process card and process chart.
3. Our quality inspection procedure is quite strict.it must self-inspected during production, we have flow inspectors and professional inspectors.
4. Each size of product must be tested one by one after completing production and provide quality report.
5. The most important point, we are the entity factory, not trading company. Price is the composition of the actual product quality price. Quality can guarantee more controllable higher than trading company. The price is competitive, at least reducing the trade company's service fee.
6. We have many years of export experience,exports to the US,Europe, Japan and other countries and regions.

Custom Metal Solutions

Candle Holders/Cups	Medical Containers	Metal End Covers	Mobile Phone Shells
Crafts Stamping Parts	Tablewares	Aluminum Lids	Cabinet Enclosures
Lighting Stamping Parts	Filters/Strainers	Cosmetic Caps	Furniture Accessories
Metal Brackets/Stand	Protective Shields	Essential Oil Caps	Door&Window Fittings
Electronic Components	Sheet Metal Panels	Perfume Caps	Shafts/Sleeves/Gears
Electrical Connections	Cooling Fins	Wine Bottle Caps	Fasteners
Metal Structures	Metal Contact Clips	Jar Caps	Machinery Parts
Car Spare Parts	Motor Spare Parts	Glass Bottle Caps	Pipe Fittings/Elbows

Equipments&Facilities

High Speed Punching Machine	CNC Punching Machine	CNC Bending Machine
Laser Cutting Machine	CNC Wire EDM	Sheet Metal Shearer
Hydraulic Deep Drawing Machine	CNC Machining Center	Polishing Machine
Welding Machine	Wire Drawing Machine	CNC Lathe
Leveling Machine	Precise Die Casting Machine	Grinding Machine

Metal Working Service

CNC Machining	Laser Cutting	Custom Metal Welding	CNC Metal Bending
CNC Turning	Rapid Prototyping	Sheet Metal Fabrication	Metal Deep Drawing
CNC Milling	Casting&Forging	Surface Finishing	Metal Punching

Product Category

PRODUCTS SHOW



Why Choose Us



Multiple Machines

5-Axis CNC & Imp Professional machines, skillful workers, machines, skillful with accuracy of guarantee the quality and lead time. guarantee fast lead time



Strictly Confidential

We will protect the customers' design and the customer can request a confidentiality agreement



Quality Inspection

We have a strict quality inspection process to ensure the quality of our products

Workshop



FAQ

Q: How can I customize my products ?

A: Please describe your project. Include the following information so that we can provide an accurate quote: Part Name, 3D CAD Drawing, Quantity, Material, Color, Finishing.

Q: How can I know my products going on ?

A: We will offer a detailed production schedule and send weekly reports with digital pictures and videos which show the production process.

Q: Can You sign a confidentiality greement ?

A: We can sign a confidentiality agreement according to your needs.

Q: What is your terms of payment ?

A: 30% in advance ,70% balance before shipment. Other terms negotiable.

Q: Are you a trading company or factory?

A: We are direct factory with 20 experienced engineers and more than 80 employees as well approximate 3,000 square meters workshop area.

Q: What shall we do if we do not have drawings?

A: Please send your sample to our factory,then we can copy or provide you better solutions. Please send us pictures or drafts with dimensions(Length,Hight,Width),CAD or 3D file will be made for you if placed order.



Shenzhen Xianheng Technology Co.,Ltd

☎ 0086-13682614486

✉ shawn@xianheng-tech.com

🌐 cnc-metalmachining.com

Room 8-1409, Xingji jiyuan building 8-9#, HongXing community, Songgang street, Bao'an District, Shenzhen City China