



Custom Aluminum Heatsink Extrusion Profile Skived Fin Heat Sink For High Power Equipment CNC Machining Heat Sink

Our Product Introduction

for more products please visit us on cnc-metalmachining.com

Basic Information

- Place of Origin: Shenzhen China
- Brand Name: Xiange
- Certification: ISO9001:2015
- Model Number: CNC-METAL-028
- Minimum Order Quantity: 1 pcs
- Price: USD \$0.1-\$1.99
- Packaging Details: Carton, As Customers' packaging requirements
- Delivery Time: Samples 7-10 days, Mass production 20-25 days
- Payment Terms: T/T, Western Union, MoneyGram
- Supply Ability: 10000 pcs per week

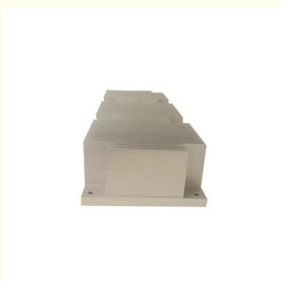


Product Specification

- Cnc Machining Or Not: CNC Machining
- Material Capabilities: Aluminum Alloy, Aluminum 1050/1060/5052/6061/6063/7075 Etc.
- Process: CNC Machining, Extrusion Profile
- Surface Treatment: Anodizing, Nature
- Application: Heat Sink, Equipments Accessories
- Tolerance: 0.01mm, 0.05 Mm, +/-0.005, 0.003-0.05mm
- Sample: Acceptable
- Highlight: **custom aluminum skived fin heat sink, high power equipment skived fin heat sink, high power equipment aluminium heatsink extrusion**



More Images



Product Description

What We Can Provide

Custom Aluminum Heatsink Extrusion Profile Skived Fin Heat Sink For High Power Equipment CNC Machining Heat Sink

Description of High Precision Customized CNC Machining Heat Sink

"High Precision Customized CNC Machining Heat Sink" refers to a specialized service that designs and manufactures custom heat sinks with high precision using CNC (Computer Numerical Control) machining processes. These heat sinks are tailored to meet the specific thermal management needs of various industries.

Comprehensive CNC Machining Services:

Various Machining Operations: Offering a range of CNC machining processes including milling, drilling, and finishing to create custom heat sinks that meet diverse requirements.

Secondary Operations: Providing additional services such as surface treatment (anodizing, plating), assembly, and quality inspection to deliver fully finished and ready-to-use heat sinks.

Specification of Skived Fin Heat Sink

Main Products	Liquid Cold Plate, Skived Fin Heat Sink, CNC Machining Parts, Laser Parts, Extrusion Heat Sink
Material	Aluminum Alloy, Aluminum 1050/1060/6061/6063/7075, ADC12, Copper 1100, SS 303/304.
Process	Copper or Aluminum Tube, Vacuum Brazing, Customized, Nickel plating with soldering
Machined Size	Customized, L:2500*W:2500mm

Features of Skived Fin Heat Sink

1. Good corrosion resistance
2. High strength and hardness
3. Good heat dissipation performance
4. Good finishing characteristics

Applications of Skiven Fin Heat Sink

1. Communication Equipment Accessories
2. Industrial Equipment Accessories
3. Medical Equipments Accessories
4. Electrical Equipment Accessories
5. Mechanical Equipment Accessories

Why Choose Us

Competitive Advantage

1. Quick Response: your inquiry will be replied in 24 hours, sales are more than 10 years of engineer background, react fast and give strong support.
2. Competitive Price: we are original manufacturer; low operating cost and innovative ideas enable to offer very competitive cost.
3. One-Step Service: offer from design, machining, surface treatment to finally assembly.
4. Quality Guarantee: Experienced engineers, precision production machines, precision inspection equipment with experienced inspectors and QC system to ensure quality.
5. Production Capacity: 18sets Swiss Machining Lathes and 100sets 3/4/5 Axis CNC machining centers with 500,000pcs monthly of sufficient production capacity enable to meet large demand.
6. On Time Delivery: Sufficient production capacity and strong project management.
7. Good Service: Good service runs throughout the whole process from inquiry/quotation, sampling, production, inspection, packaging to delivery and after sale.
8. Value-added services: A trusted partner who can help you purchase a variety of other legal items, including a variety of special products

Factory Equipment



WEDM



Milling Machine



CNC Wire Cut



Coordinate measuring machine



CNC Bending Machine



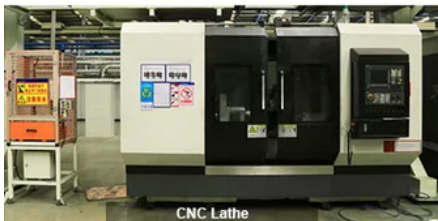
Hydraulic Press Machine



SLS/SLA Machine



5-Axis CNC



CNC Lathe



Laser cutting Machine



CNC Punching Machine



Injection Molding machine

FAQ

Q: How can I customize my products ?

A: Please describe your project. Include the following information so that we can provide an accurate quote: Part Name, 3D CAD Drawing, Quantity, Material, Color, Finishing.

Q: How can I know my products going on ?

A: We will offer a detailed production schedule and send weekly reports with digital pictures and videos which show the production process.

Q: Can You sign a confidentiality greement ?

A: We can sign a confidentiality agreement according to your needs.

Q: What is your terms of payment ?

A: 30% in advance ,70% balance before shipment. Other terms negotiable.

Q: Are you a trading company or factory?

A: We are direct factory with 20 experienced engineers and more than 80 employees as well approximate 3,000 square meters workshop area.

Q: What shall we do if we do not have drawings?

A: Please send your sample to our factory,then we can copy or provide you better solutions. Please send us pictures or drafts with dimensions(Length,Height,Width),CAD or 3D file will be made for you if placed order.



Shenzhen Xianheng Technology Co.,Ltd

☎ 0086-13682614486

✉ shawn@xianheng-tech.com

🌐 cnc-metalmachining.com

Room 8-1409, Xingji jiayuan building 8-9#, HongXing community, Songgang street, Bao'an District, Shenzhen City China

