



## High Precision CNC Machining Parts Custom OEM Brass CNC Machining Parts Service

### Our Product Introduction

#### Basic Information

- Place of Origin: Shenzhen China
- Brand Name: Xiange
- Certification: ISO9001:2015
- Model Number: BS-CNC-062
- Minimum Order Quantity: 1 pcs
- Price: USD \$0.1-\$1.99
- Packaging Details: Carton, As Customers' packaging requirements
- Delivery Time: Samples 7-10 days, Mass production 20-25 days
- Payment Terms: T/T, Western Union, MoneyGram
- Supply Ability: 10000 pcs per week

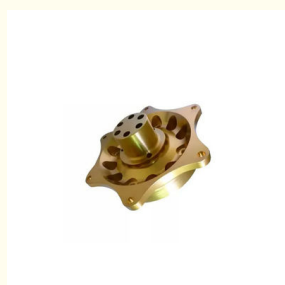


#### Product Specification

- Cnc Machining Or Not: CNC Machining
- Type: Milling, Turning, Machining
- Material Capabilities: Copper, Aluminum, Bronze, Stainless Steel, Brass
- Surface Treatment: Anodized, Anodizing, Anodize/natural, Sandblast, Silk-screen
- Application: Machinery, Automotive, Laptop, Industrial Equipment, Engineering
- Tolerance: 0.01mm, 0.05 Mm, +/-0.005, 0.003-0.05mm
- Service: OEM/ODM, OEM ODM Metal Stamping, Customized OEM OEM ODM, OEM Service
- Color: As Per Customers' Requirement
- Keyword: CNC Milling Brass Parts
- Sample: Acceptable
- Highlight: **Custom Brass CNC Parts,  
High Precision CNC Machining Parts,  
OEM Brass CNC Machining Parts**



#### More Images



## Product Description

### What We Can Provide

High Precision CNC Machining Parts Metal Parts Custom OEM Brass CNC Machining Parts Service CNC Machining Factory

#### Description of High Precision OEM CNC Machining Brass Part CNC Machining Factory

"High Precision OEM CNC Machining Brass Part CNC Machining Factory" refers to a specialized manufacturing facility that produces precise brass components using CNC (Computer Numerical Control) machining techniques, catering to original equipment manufacturers (OEMs).

**High Precision:** This signifies a manufacturing process capable of achieving exceptionally accurate and consistent results. In the context of CNC machining brass parts, high precision means tight tolerances, minimal deviations from specifications, and consistent quality across production batches. The focus is on achieving exact dimensions, surface finishes, and intricate features required for the brass components.

**OEM (Original Equipment Manufacturer):** OEM refers to a company that designs and manufactures parts or products intended for use by another company under its own brand name. In this context, the CNC machining factory specializes in producing brass parts tailored to the specifications provided by OEM clients. These parts are engineered to seamlessly integrate into the final products of the OEM customers.

**CNC Machining Factory:** This refers to a specialized manufacturing facility equipped with CNC machining equipment and skilled personnel dedicated to producing precision components. The factory is responsible for all stages of the production process, including material procurement, programming CNC machines, machining the parts, conducting quality inspections, and delivering finished components to customers.

#### Specification of High Precision OEM CNC Machining Brass Parts

Business Type	CNC Machined Parts Factory / Manufacturer
Service	1. CNC Machining 2. Turning and Milling 3. CNC Turning 4. OEM Parts
Material	Aluminum: 5052, 6061, 6063, 6082, 7075-T etc 2. Steel: 4140, Q235, Q345B, etc. 3. Titanium: TA1, TA2/GR2, TA4/GR5, TC4, TC18, etc. 4. Stainless steel: 303, 304, 316L, etc. 5. Brass: C36000, C37700, C26800, C22000 etc 6. Plastic: Pom, ABS, Nylon, etc.
Main Equipment	CNC Machining center (Milling), CNC Lathe, Grinding machine
Treatment	Sandblasting, Anodize color, Blackening, Zinc/Nickel Plating, Polish, Passivation PVD, Titanium Plating, Electro galvanizing, electroplating chromium, electrophoresis, QPQ (Quench-Polish-Quench), Electro Polishing, Chrome Plating, Knurl, Power coating, Laser etch Logo,
Tolerance	$\pm 0.01\text{mm} \sim \pm 0.05\text{mm}$
Drawing format	STEP, STP, GIS, CAD, PDF, DWG, DXF etc or samples.

#### Application Of High Precision OEM CNC Machining Brass Parts

1. Auto Components Hardware Parts Auto Parts
2. Communication Equipment
3. Industrial Equipment
4. Medical Equipments Mechanical Parts
5. Ship Accessories
6. Electrical Equipment
7. Mechanical Equipment

#### Quality Control

1. Checking the raw material after they reach our factory----- Incoming quality control ( IQC)
2. Checking the details before the production line operated
3. Have full inspection and routing inspection during mass production---In process quality control(IPQC)
4. Checking the goods after they are finished---- Final quality control(FQC)
5. Checking the goods after they are finished-----Outgoing quality control(OQC)

### Why Choose Us

#### Our promise

1. Offering design and improvement scheme freely.
2. Offering video and photos with details freely during production.
3. Helping customers to do factory inspection freely for his other Chinese suppliers.
4. Producing completely according to the accuracy of drawings, assembly measurement to detect function and strict quality control to ensure 0 return rate.
5. 99% orders can be ensured delivery time.
6. Quote can be offered within 2 days fastest
7. Delivery time is only 7 days fastest.
8. Responding to the enquiry within 2 hours.
9. The materials we use are optimal.
10. 24 hours online service.
11. The lowest price with the same quality and service.
12. Logistics arrangement with high performance to price ratio.
13. The most suitable packing method to different products.

## Factory Show

### Factory Equipment



WEDM



Milling Machine



CNC Wire Cut



Coordinate measuring machine



CNC Bending Machine



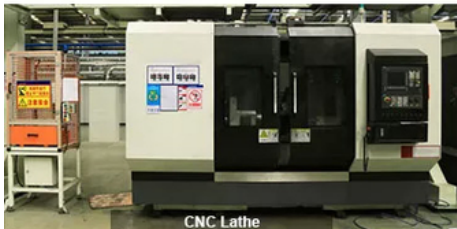
Hydraulic Press Machine



SLS/SLA Machine



5-Axis CNC



CNC Lathe



Laser cutting Machine



CNC Punching Machine



Injection Molding machine



## FAQ

1. How can I get the price? - We usually quote within 24 hours after we get your inquiry (except weekend and holidays). If you are urgent to get the price, please email us or contact us in other ways so that we can offer you a quote.
2. Can I buy samples? - Yes. Please feel free to contact us.
3. What is your lead time? - It depends on the order quantity and the season you place the order. Usually we can ship within 7-15 days for small quantity, and about 30 days for large quantity.
4. What is your payment term? - T/T, Western Union, MoneyGram, and Paypal. This is negotiable.
5. What is the shipping method? - It could be shipped by sea, by air, or by express (EMS, UPS, DHL, TNT, FEDEX etc). Please confirm with us before placing orders.
6. How do you make our business long-term and good relationship? - We keep good quality and competitive price to ensure our customers benefit. Furthermore, we respect every customer as our friend and we sincerely do business and make friends with them, no matter where they come from.



**Shenzhen Xianheng Technology Co.,Ltd**

☎ 0086-13682614486

✉ shawn@xianheng-tech.com

🌐 cnc-metalmachining.com

Room 8-1409, Xingji jiayuan building 8-9#, HongXing community, Songgang street, Bao'an District, Shenzhen City China

