



Custom Sheet Metal Fabrication Parts High Precision Laser Cutting Welding Frame Metal Precision Stamping Shell Supplier

Our Product Introduction

for more products please visit us on cnc-metalmachining.com

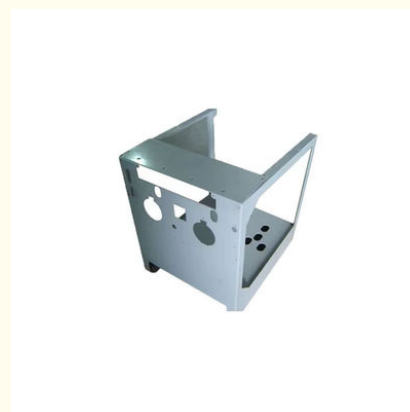
Basic Information

- Place of Origin: China
- Brand Name: Xiange
- Certification: ISO 9001:2015 SGS RoHS
- Model Number: MF-XG-23
- Minimum Order Quantity: 1 pcs
- Price: USD 1\$-2\$
- Packaging Details: Carton Wooden case
- Delivery Time: 5-8 days
- Payment Terms: T/T, Western Union, MoneyGram
- Supply Ability: 10 SET per week

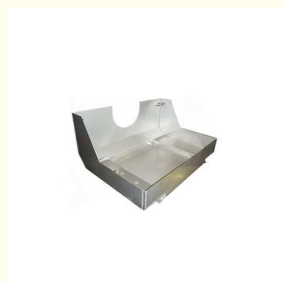


Product Specification

- Material Capabilities: Stainless Steel, Aluminium, Copper, Brass
- Products: Metal Equipment Shell
- Process: Metal Sheets Fabrication, Welding Cutting Punching Stamping
- Application: Electronic Equipment Sheet Metal Shell, Custom Control Box Cabinet Chassis Shell
- OEM/ODM: Acceptable
- Equipment: Precision Nonstandard Parts
- Surface Treatment: Powder Coated, Hot Galvanized, Painting, Polishing, Spray Coating, Brushing, Cathaphoresis, Sandblasting, Electroplate Chrome/Zinc/Nickel Plating/Anodize/Electronic Polish, Silk-screen Etc;
- Package: Platic Bag ,Blister Box ,Tap Reel Or As Your Required
- Used: Computer, Telecom, mechical ,electronics, appliance, military, aerospace.



More Images



Product Description

What We Can Provide

Custom Sheet Metal Fabrication Parts High Precision Laser Cutting Welding Frame Metal Precision Stamping Shell Supplier

Description of High Precision OEM Bending Aircraft CNC Copper Welding Frame Metal Precision Stamping Shell Supplier

A High Precision OEM Bending Aircraft CNC Copper Welding Frame Metal Precision Stamping Shell Supplier is a specialized company that offers a range of manufacturing services and products to customers in the aerospace, automotive, electronics, and other industries that require high-precision metal components.

High Precision Bending: Utilizing advanced bending techniques and equipment, the supplier is capable of forming metal sheets, plates, or tubes into precise shapes and angles with minimal distortion or imperfections. This is crucial for components used in aircraft, where even the slightest deviation from specifications can compromise safety and performance.

OEM (Original Equipment Manufacturer) Services: The supplier provides customized solutions to original equipment manufacturers (OEMs) by designing and manufacturing metal components and assemblies according to their specific requirements. This may involve reverse engineering existing parts, designing new components from scratch, or modifying existing designs to meet new specifications.

CNC (Computer Numerical Control) Machining: By employing CNC machines, the supplier ensures high levels of accuracy and repeatability in the manufacturing process. CNC machines are programmed to perform precise cutting, drilling, milling, and other machining operations on metal materials, resulting in components with tight tolerances and exceptional quality.

Specification of High Precision OEM Bending Aircraft CNC Copper Welding Frame Metal Precision Stamping Shell Supplier

Product	Custom Sheet Metal Fabrication Laser Cutting Bending Sheet Metal Stamping Parts
Material	Stainless Steel, Carbon Steel(Q235), Aluminum(6061,6063, 5052), Copper, Brass etc.
Process	Bending, Stamping, Welding
Finish	Zinc Plating, Mirror Polished, Brush Polished, Paint, Anodic Oxidation, Powder Coated
Package	Plywood Box + Plywood Pallet, Plywood Box
OEM Service	Accept

Quality Control

1. Checking the raw material after they reach our factory----- Incoming quality control (IQC)
2. Checking the details before the production line operated
3. Have full inspection and routing inspection during mass production---In process quality control(IPQC)
4. Checking the goods after they are finished---- Final quality control(FQC)
5. Checking the goods after they are finished-----Outgoing quality control(OQC)

Application Of High Precision OEM Bending Aircraft CNC Copper Welding Frame Metal Precision Stamping Shell Supplier

1. Auto Components Hardware Parts Auto Parts
2. Communication Equipment
3. Industrial Equipment
4. Medical EquipmentsMechanical Parts
5. Ship Accessories
6. Electrical Equipment
7. Mechanical Equipment

Why Choose Us

Advantages

1. Quality control: the defective products rate is 0.1%. Imported material 100%.
2. Reasonable price. Precision made. Experience & reasonable QC that you can rely on.
3. Each part would be given 100% test and tryout before shipment.
4. Adequate supply capacity. Punctual delivery time.



Multiple Machines

5-Axis CNC & Imp Professional machines, skillful workers, machines, skillful
With accuracy of guarantee the quality and lead time. guarantee fast lead time



Strictly Confidential

We will protect the customers' design
and the customer can request a
confidentiality agreement



Quality Inspection

We have a strict quality inspection
process to ensure the quality of our
products

Stainless Steel Material

Material:

Stainless Steel 201
Stainless Steel 430
Stainless Steel 304
Stainless Steel 316

Finish:

Mirror Polishing
Brush Polishing
Electro Polishing
Vibration Polishing



FAQ

Q1: Where can I get product & price information?

A1: Send us inquiry e-mail, we will contact you as we receive your mail.

Q2: How long can I get the sample?

A2: Depends on your specific items, within 3-7 days is required generally.

Q3: What kinds of information you need for quote?

A3: Kindly please provide the product drawing in PDF, and will be better you can provide in STEP or IGS.

Q4: What are the payment terms?

A4: We accept 50% as payment deposit, when the goods is done, we take photos for your check and you then pay the balance.

Q5: Are you a trading company or factory?

A5: We are direct factory with 10 experienced engineers and more than 650 employees as well approximate 2,000 square ft. workshop area.

Q6: What shall we do if we do not have drawings?

A6: Please send your sample to our factory, then we can copy or provide you better solutions. Please send us pictures or drafts with dimensions (Length, Height, Width), CAD or 3D file will be made for you if placed order.



Shenzhen Xianheng Technology Co.,Ltd

 0086-13682614486

 shawn@xianheng-tech.com

 cnc-metalmachining.com

Room 8-1409, Xingji jiayuan building 8-9#, HongXing community, Songgang street, Bao'an District, Shenzhen City China