



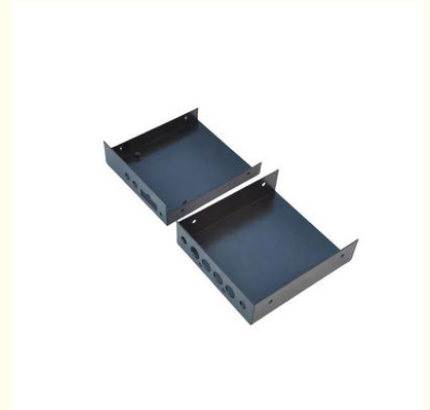
## Custom Sheet Metal Fabrication Parts High Precision Laser Cutting Welding Equipment Shell

Our Product Introduction

for more products please visit us on [cnc-metalmachining.com](http://cnc-metalmachining.com)

### Basic Information

- Place of Origin: China
- Brand Name: Xiange
- Certification: ISO 9001:2015 SGS RoHS
- Model Number: MF-XG-25
- Minimum Order Quantity: 1 pcs
- Price: USD 1\$-2\$
- Packaging Details: Carton Wooden case
- Delivery Time: 5-8 days
- Payment Terms: T/T, Western Union, MoneyGram
- Supply Ability: 10 SET per week



### Product Specification

- Material Capabilities: Stainless Steel, Aluminium, Copper, Brass
- Products: Metal Equipment Shell
- Process: Metal Sheets Fabrication, Welding Cutting Punching Stamping
- Application: Electronic Equipment Sheet Metal Shell, Custom Control Box Cabinet Chassis Shell
- OEM/ODM: Acceptable
- Equipment: Precision Nonstandard Parts
- Surface Treatment: Powder Coated, Hot Galvanized, Painting, Polishing, Spray Coating, Brushing, Cathaphoresis, Sandblasting, Electroplate Chrome/Zinc/Nickel Plating/Anodize/Electronic Polish, Silk-screen Etc;
- Package: Plastic Bag, Blister Box, Tap Reel Or As Your Required
- Used: Computer, Telecom, mechanical, electronics, appliance, military, aerospace.



### More Images



## Product Description

### What We Can Provide

Custom Sheet Metal Fabrication Parts High Precision Laser Cutting Welding Metal Stamping Shell Supplier

#### Description of High Precision OEM Bending Aircraft CNC Copper Welding Frame Metal Stamping Shell Supplier

A High Precision OEM Bending Aircraft CNC Copper Welding Frame Metal Stamping Shell Supplier is a specialized company that offers manufacturing services for high-precision components and assemblies, particularly in the aerospace industry. This supplier utilizes advanced technologies and equipment to produce custom-made parts and frames that meet the stringent requirements of the aerospace sector.

**OEM (Original Equipment Manufacturer) Services:** The supplier works closely with clients to design, develop, and manufacture original equipment parts and assemblies according to specific specifications and requirements. This involves understanding the unique needs of each project and tailoring solutions to meet them.

**High Precision Bending:** The supplier possesses expertise in precision bending, a crucial process for creating accurately shaped metal components. This involves using precision machinery and tools to bend metal sheets or rods into complex shapes and angles, ensuring tight tolerances and high-quality outcomes.

**Aircraft-Grade Materials:** The focus on the aerospace industry means the supplier works with specialized materials, including copper, aluminum, stainless steel, and other alloys that are lightweight, durable, and resistant to corrosion. Copper, for instance, is often used for its excellent conductivity and resistance to fatigue.

**CNC (Computer Numerical Control) Machining:** The supplier employs CNC technology to automate the production process, enhancing precision and efficiency. CNC machines are programmed to perform a wide range of operations, including cutting, drilling, milling, and more, with extreme accuracy and repeatability.

#### Specification of High Precision OEM Bending Aircraft CNC Copper Welding Frame Metal Stamping Shell Supplier

Product	Custom Sheet Metal Fabrication Laser Cutting Bending Sheet Metal Stamping Parts
Material	Stainless Steel, Carbon Steel(Q235), Aluminum(6061,6063, 5052), Copper, Brass etc.
Process	Bending, Stamping, Welding
Finish	Zinc Plating, Mirror Polished, Brush Polished, Paint, Anodic Oxidation, Powder Coated
Package	Plywood Box + Plywood Pallet, Plywood Box
OEM Service	Accept

#### Quality Control

1. Checking the raw material after they reach our factory----- Incoming quality control ( IQC)
2. Checking the details before the production line operated
3. Have full inspection and routing inspection during mass production---In process quality control(IPQC)
4. Checking the goods after they are finished---- Final quality control(FQC)
5. Checking the goods after they are finished-----Outgoing quality control(OQC)

#### Application Of High Precision OEM Bending Aircraft CNC Copper Welding Frame Metal Stamping Shell Supplier

1. Auto Components Hardware Parts Auto Parts
2. Communication Equipment
3. Industrial Equipment
4. Medical EquipmentsMechanical Parts
5. Ship Accessories
6. Electrical Equipment
7. Mechanical Equipment

### Why Choose Us

#### Advantages

1. Quality control: the defective products rate is 0.1%. Imported material 100%.
2. Reasonable price. Precision made. Experience & reasonable QC that you can rely on.
3. Each part would be given 100% test and tryout before shipment.
4. Adequate supply capacity. Punctual delivery time.



## Multiple Machines

5-Axis CNC & Imp Professional machines, skillful workers, machines, skillful  
with accuracy of guarantee the quality and lead time. guarantee fast lead time



## Strictly Confidential

We will protect the customers' design  
and the customer can request a  
confidentiality agreement



## Quality Inspection

We have a strict quality inspection  
process to ensure the quality of our  
products

## Stainless Steel Material

### Material:

Stainless Steel 201  
Stainless Steel 430  
Stainless Steel 304  
Stainless Steel 316

### Finish:

Mirror Polishing  
Brush Polishing  
Electro Polishing  
Vibration Polishing



## FAQ

Q: How can I customize my products ?

A: Please describe your project. Include the following information so that we can provide an accurate quote: Part Name, 3D CAD Drawing, Quantity, Material, Color, Finishing.

Q: How can I know my products going on ?

A: We will offer a detailed production schedule and send weekly reports with digital pictures and videos which show the production process.

Q: Can You sign a confidentiality greement ?

A: We can sign a confidentiality agreement according to your needs.

Q: What is your terms of payment ?

A: 30% in advance ,70% balance before shipment. Other terms negotiable.

Q: Are you a trading company or factory?

A: We are direct factory with 20 experienced engineers and more than 80 employees as well approximate 3,000 square meters workshop area.

Q: What shall we do if we do not have drawings?

A: Please send your sample to our factory,then we can copy or provide you better solutions. Please send us pictures or drafts with dimensions(Length, Height, Width), CAD or 3D file will be made for you if placed order.



**Shenzhen Xianheng Technology Co.,Ltd**



0086-13682614486



shawn@xianheng-tech.com



cnc-metalmachining.com

Room 8-1409, Xingji jiayuan building 8-9#, HongXing community, Songgang street, Bao'an District, Shenzhen City China