



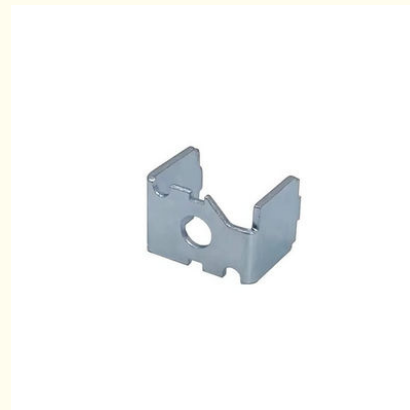
Stainless Steel Precision Metal Stamping Parts Customized OEM Precision Stamping Metal Products Manufacturer

Our Product Introduction

for more products please visit us on cnc-metalmachining.com

Basic Information

- Place of Origin: Shenzhen China
- Brand Name: Xianheng
- Certification: ISO9001:2015
- Model Number: PMS-XG-052
- Minimum Order Quantity: 1 pcs
- Price: USD \$0.1-\$1.99
- Packaging Details: Carton, As Customers' packaging requirements
- Delivery Time: Samples 7-10 days, Mass production 20-25 days
- Payment Terms: T/T, Western Union, MoneyGram
- Supply Ability: 50000 pcs per week



Product Specification

- Material: Copper, Stainless Steel, Aluminum, Brass, Etc.
- Surface Treatment: Hot Galvanized, Zinc Plating, Nickel Plating, Powder Plating, Anodize
- Process: Stamping, Punching, Bending, Punching Of Stamping Blanks, Stamping + CNC
- Application: Construction, Industrial, Used Widely Industry Auto, Mechanical Equipment, Auto Parts
- Service: OEM/ODM, OEM ODM Metal Stamping, Customized OEM OEM ODM, OEM Service
- Tolerance: 0.01mm, 0.05 Mm, +/-0.005, 0.003-0.05mm
- Oem: Available
- Quality: ISO9001
- Keywords: Custom Stamping Metal
- Packing: As Customers' Requirement
- Highlight: Customized Precision Metal Stamping Parts,



More Images



Product Description

What We Can Provide

Stainless Steel Precision Metal Stamping Parts Customized OEM Precision Stamping Metal Products Manufacturer

Description of Stamping Bending Parts Sheet Metal Fabrication Precision Stamping Metal Products Manufacturer

Stamping Bending Parts Sheet Metal Fabrication Precision Stamping Metal Products Manufacturer is a company that specializes in the production of custom-made metal parts through the use of stamping and bending techniques. This type of manufacturer is equipped with advanced machinery and equipment that allows them to create high-precision, high-quality metal products for a wide range of industries.

The manufacturing process typically begins with the selection of the appropriate metal material, which can include stainless steel, aluminum, brass, copper, and other alloys. The metal sheet is then cut to the desired size and shape, ready for the stamping and bending process.

During the stamping process, the metal sheet is placed in a stamping press, where it is pressed and shaped by a die and punch combination. The die is a precision-made tool that defines the final shape of the part, while the punch forces the metal into the die, cutting or forming it to the desired shape. This process can be repeated multiple times to create complex parts with multiple features.

Bending is often used in conjunction with stamping to create parts with specific angles or curves. The metal sheet is clamped in a bending machine and force is applied to bend it to the desired angle. This process can be done manually or automatically, depending on the complexity of the part and the equipment available.

Specification of Stamping Bending Parts Sheet Metal Fabrication Precision Stamping Metal Products Manufacturer

Name	Custom OEM Laser Cutting Sheet Metal Fabrication Services Copper Stainless Steel Anodised Aluminum Metal Stamping bending Parts
Material	Zn-plating, Ni-plating, Cr-plating, Tin-plating, copper-plating, the wreath oxygen resin spraying, the heat disposing, hot-dip galvanizing, black oxide coating, painting, powdering, color zinc-plated, blue black zinc-plated, rust preventive oil, titanium alloy galvanized, silver plating, plastic, electroplating, anodizing etc.
Applications	Automotive, instrument, electrical equipment, household appliances, furniture, mechanical equipment, daily living equipment, electronic sports equipment, light industry products, sanitation machinery, market/ hotel equipment supplies, artware etc.
Packaging	Regular: Paper, Foam, OPP bag, Carton; Other: According to customers' requirements
Testing Equipment	Projecting apparatus, Salt Spray Test, Durometer, and Coating thickness tester
Tolerance	±0.01-0.05mm
Drawing	JPG, PDF, CAD, DWG, STP, STEP

Quality Control

1. Checking the raw material after they reach our factory----- Incoming quality control (IQC)
2. Checking the details before the production line operated
3. Have full inspection and routing inspection during mass production---In process quality control(IPQC)
4. Checking the goods after they are finished---- Final quality control(FQC)
5. Checking the goods after they are finished-----Outgoing quality control(OQC)

Application Of Stamping Bending Parts Sheet Metal Fabrication Precision Stamping Metal Products Manufacturer

1. Auto Components Hardware Parts Auto Parts
2. Communication Equipment
3. Industrial Equipment
4. Medical EquipmentsMechanical Parts
5. Ship Accessories
6. Electrical Equipment
7. Mechanical Equipment

Why Choose Us

Our Advantages

1. Small details make big difference. We promise:All the parts from our company have no sharp edge. All dimensions are controlled according to your drawings. Every product will be fully inspected and carefully packed to prevent the bump and rust

in transit.

2. The craftsmanship of all parts we machined is controlled rigorously, Every product has its own process card and process chart.

3. Our quality inspection procedure is quite strict.it must self-inspected during production, we have flow inspectors and professional inspectors.

4. Each size of product must be tested one by one after completing production and provide quality report.

5. The most important point, we are the entity factory, not trading company. Price is the composition of the actual product quality price. Quality can guarantee more controllable higher than trading company. The price is competitive, at least reducing the trade company's service fee.

6. We have many years of export experience,exports to the US,Europe, Japan and other countries and regions.

7. Our team are more professional. We have more reasonable price and better quality controlling than trade company. And our language ability is also diversified.



Multiple Machines

5-axis CNC & Imp Professional machines, skillful workers, machines, skillful
with accuracy of guarantee the quality and lead time. free first lead time



Strictly Confidential

We will protect the customers' design
and the customer can request a
confidentiality agreement



Quality Inspection

We have a strict quality inspection
process to ensure the quality of our
products

Stainless Steel Material

Material:

Stainless Steel 201
Stainless Steel 430
Stainless Steel 304
Stainless Steel 316

Finish:

Mirror Polishing
Brush Polishing
Electro Polishing
Vibration Polishing



FAQ

Q1: Where can I get product & price information?

A1: Send us inquiry e-mail, we will contact you as we receive your mail.

Q2: How long can I get the sample?

A2: Depends on your specific items, within 3-7 days is required generally.

Q3: What kinds of information you need for quote?

A3: Kindly please provide the product drawing in PDF, and will be better you can provide in STEP or IGS.

Q4: What are the payment terms?

A4: We accept 50% as payment deposit, when the goods is done, we take photos for your check and you then pay the balance.

Q5: Are you a trading company or factory?

A5: We are direct factory with 10 experienced engineers and more than 650 employees as well approximate 2,000 square ft. workshop area.

Q6: What shall we do if we do not have drawings?

A6: Please send your sample to our factory, then we can copy or provide you better solutions. Please send us pictures or drafts with dimensions (Length, Height, Width), CAD or 3D file will be made for you if placed order.



Shenzhen Xianheng Technology Co.,Ltd

0086-13682614486

shawn@xianheng-tech.com

cnc-metalmachining.com

Room 8-1409, Xingji jiaoyuan building 8-9#, HongXing community, Songgang street, Bao'an District, Shenzhen City China

