



Carbon Steel Stamping Stainless Steel Shell Medical Equipment Metal Cabinet Assembly Supplier

Our Product Introduction

for more products please visit us on cnc-metalmachining.com

Basic Information

- Place of Origin: China
- Brand Name: Xianheng
- Certification: ISO 9001:2015 SGS RoHS
- Model Number: MC-XG-29
- Minimum Order Quantity: 1 pcs
- Price: USD 0.1\$-2\$
- Packaging Details: Carton Wooden case
- Delivery Time: 5-8 days
- Payment Terms: T/T, Western Union, MoneyGram
- Supply Ability: 10 SET per week

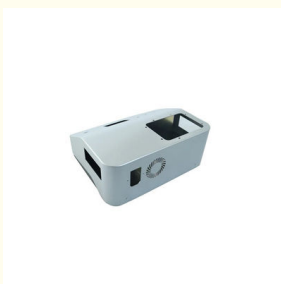


Product Specification

- Material Capabilities: Stainless Steel, Aluminium, Copper, Brass
- Products: Metal Equipment Shell, Sheet Metal Cabinet Assembly Stamping Parts
- Process: Metal Casing, Metal Sheets Fabrication, Welding Cutting Punching Stamping
- Application: Carbinet, Parts: Cars, E-sports Hotel, Architecture, Furniture, metal Plastic Parts
- Place Of Origin: China Guangdong
- Tolerance: +/-0.02mm
- MOQ: 1 Piece
- OEM/ODM: Acceptable
- Equipment: Laser Cutter, CNC Bending Machine, Stamping Machine, Weld
- Surface Treatment: Galvanized, Anodizing, Powder Coated, Chrome Plating, Nickel Plating Etc.
- Craftsmanship: CNC Stamping, CNC Bending, Welding, Laser



More Images



Product Description

What We Can Provide

Carbon Steel Stamping Stainless Steel Shell Medical Equipment Metal Cabinet Assembly Supplier

Description of Carbon Steel Stamping Stainless Steel Shell Medical Equipment Metal Cabinet Assembly Supplier

Carbon Steel Stamping Stainless Steel Shell Medical Equipment Metal Cabinet Assembly Supplier refers to a company that specializes in the manufacturing and supply of medical equipment and metal cabinets using carbon steel stamping for components, stainless steel for the exterior shell, and assembly techniques tailored for medical applications.

Specification of Carbon Steel Stamping Stainless Steel Shell Medical Equipment Metal Cabinet Assembly Supplier

CNC Capacity				
CNC Machining Center	3 / 4 / 5 axis CNC Machining Centers		40+ CNC Machines	
CNC Turning	φ0.5 - φ300 * 750 mm		DIN-2768-Fine +/-0.005 mm	
CNC Machining	1270×508×635 mm(max)		DIN-2768-Fine +/-0.005 mm	
CNC Stamping	1000 * 1000 mm(max)		DIN-2768-Fine +/-0.005 mm	
Drawing Format	IGS,STP,X_T ,DXF,DWG , Pro/E, PDF			
Inspection Equipments	Measurement Instrument, Projector, CMM, Altimeter, Micrometer, Thread Gages, Calipers, Pin Gauge etc.			
Material Available				
Stainless Steel	SS201,SS301, SS303, SS304, SS316, SS416, 17-4PH, etc.			
Steel	Mild steel, Carbon Steel, 4140, 4340, Q235, Q345B, 20#, 45# etc.			
Brass	HPb63, HPb62, HPb61, HPb59, H59, H68, H80, H90 etc.			
Copper	C11000,C12000,C12000 C36000 etc.			
Aluminum	AL6061, AL6063, AL6082, AL7075, AL5052, A380 etc.			
Iron	A36, 45#, 1213, 12L14, 1215 etc.			
Plastic	ABS, PC, PE, POM, Delrin, Nylon, Teflon, PP,PEI, Peek etc.			
Surface Finishing				
Aluminum Parts	Stainless Steel Parts	Steel Parts	Copper /Brass	Plastic Parts
Clear Anodized	Polishing	Zinc plating	Polishing	Painting
Color Anodized	Passivating	Oxide black	Passivation	Chrome plating
Sandblast Anodized	Sandblasting	Nickel plating	Galvanized	polishing
Chemical Film	Laser engraving	Chrome plating	Nickel Plating	Sandblast
Brushing		Carburized	Chrome plating	Laser engraving
Polishing		Heat treatment		
Chroming		Powder Coated		

Application Of Carbon Steel Stamping Stainless Steel Shell Medical Equipment Metal Cabinet Assembly Supplier

1. Auto Components Hardware Parts Auto Parts
2. Communication Equipment
3. Industrial Equipment
4. Medical EquipmentsMechanical Parts
5. Ship Accessories
6. Electrical Equipment
7. Mechanical Equipment

Feature Of Carbon Steel Stamping Stainless Steel Shell Medical Equipment Metal Cabinet Assembly Supplier

1. Good corrosion resistance
2. High strength and hardness
3. High thermal conductivity
4. Good finishing characteristics

Why Choose Us

Advantages

1. **Quality and Compliance:** A reputable supplier will have the necessary certifications and expertise to ensure that the medical equipment and cabinets they produce meet all relevant industry standards and regulations. This includes compliance

with international safety standards and adherence to local healthcare regulations.

2. Customization and Flexibility: Medical facilities often have unique needs and requirements when it comes to equipment and storage solutions. A supplier that specializes in this area can offer customization options, allowing for the creation of equipment and cabinets that perfectly fit the specific needs of the healthcare facility.

3. Reliability and Support: Partnering with a supplier that specializes in medical equipment and cabinet assembly means having access to reliable support and service. This includes timely delivery, assistance with installation, and ongoing maintenance and repair services. This level of support ensures that healthcare facilities can continue to operate efficiently and safely.

Factory Show

Factory Equipment



WEDM



Milling Machine



CNC Wire Cut



Coordinate measuring machine



CNC Bending Machine



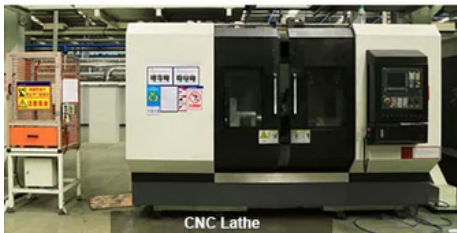
Hydraulic Press Machine



SLS/SLA Machine



5-Axis CNC



CNC Lathe



Laser cutting Machine



CNC Punching Machine



Injection Molding machine



FAQ

Q1: Where can I get product & price information?

A1: Send us inquiry e-mail, we will contact you as we receive your mail.

Q2: How long can I get the sample?

A2: Depends on your specific items, within 3-7 days is required generally.

Q3: What kinds of information you need for quote?

A3: Kindly please provide the product drawing in PDF, and will be better you can provide in STEP or IGS.

Q4: What are the payment terms?

A4: We accept 50% as payment deposit, when the goods is done, we take photos for your check and you then pay the balance.

Q5: Are you a trading company or factory?

A5: We are direct factory with 10 experienced engineers and more than 650 employees as well approximate 2,000 square ft. workshop area.

Q6: What shall we do if we do not have drawings?

A6: Please send your sample to our factory, then we can copy or provide you better solutions. Please send us pictures or drafts with dimensions (Length, Height, Width), CAD or 3D file will be made for you if placed order.



Shenzhen Xianheng Technology Co.,Ltd

☎ 0086-13682614486

✉ shawn@xianheng-tech.com

🌐 cnc-metalmachining.com

Room 8-1409, Xingji jiaoyuan building 8-9#, HongXing community, Songgang street, Bao'an District, Shenzhen City China

