



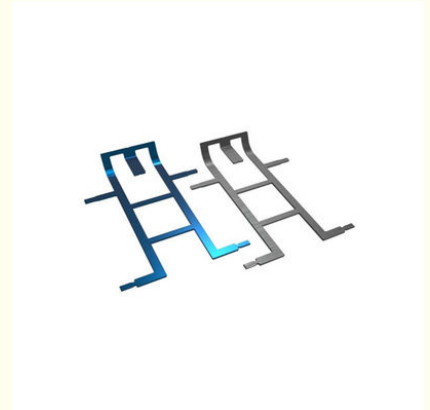
Stamping Bending Custom Brackets Industrial Medical Equipment High Precision Strength Brackets Supplier

Our Product Introduction

for more products please visit us on cnc-metalmachining.com

Basic Information

- Place of Origin: Shenzhen China
- Brand Name: Xianheng
- Certification: ISO9001:2015
- Model Number: MB-ST-063
- Minimum Order Quantity: 1 pcs
- Price: USD \$0.1-\$1.99
- Packaging Details: Carton, As Customers' packaging requirements
- Delivery Time: Samples 7-10 days, Mass production 20-25 days
- Payment Terms: T/T, Western Union, MoneyGram
- Supply Ability: 50000 pcs per week

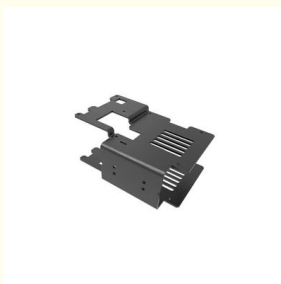


Product Specification

- Supply Type: OEM Service
- Material Capabilities: Stainless Steel, Brass, Aluminum, Steel
- Process: Bending, Laser Cutting, Welding, Stamping
- Application: Auto, motorcycle, industry, agriculture, furniture, etc.
- Packing Details: Carton, Wooden Case, Plastic Cargo
- Color: Black, Silver, Customized Color
- Place Of Origin: China
- Highlight: **Industrial Medical Equipment Brackets, Custom Bending Brackets, High Precision Strength Brackets**



More Images



Product Description

What We Can Provide

Stamping Bending Custom Brackets Industrial Medical Equipment High Precision Strength Brackets Supplier

Description Of Stamping Bending Custom Brackets Industrial Medical Equipment High Precision Strength Brackets Supplier

Utilizing high-precision stamping presses and CNC bending machines, the supplier ensures tight tolerances (e.g., $\pm 0.01\text{mm}$) and consistent quality. This precision is critical for medical applications where even minor deviations can impact performance.

Material Of Stamping Bending Custom Brackets Industrial Medical Equipment High Precision Strength Brackets Supplier

Material	Stainless steel, Aluminum, Brass, Copper etc.
Process	Stamping, Deep drawing, Laser cutting, Bending, Welding, CNC etc
Surface treatment	Zinc plating, Nickel plating, Powder coated, Paint, Brushed, Polishing, Anodized, Hot dip galvanizing etc.
MOQ	100pcs
Size	Customized Size
Certificate	ISO9001:2015
Design	3D/CAD/Dwg/IGS/STP
Package	Bubble Bag+ Carton+ Wooden Box
Application	Metal part in all fields
Service	Customize ODM OEM

Application Of Stamping Bending Custom Brackets Industrial Medical Equipment High Precision Strength Brackets Supplier

1. Construction: Metal angle brackets are extensively used in the construction industry for connecting beams, joists, and rafters. They provide critical support and reinforcement to building structures, ensuring stability and load distribution.
2. Shelving: Angle brackets are widely used as shelf supports for wall-mounted shelves in homes, offices, retail stores, and warehouses. They help create sturdy and reliable shelving systems.
3. Furniture Assembly: Metal angle brackets are essential in furniture assembly, helping to connect components and reinforcing joints in tables, chairs, cabinets, and bed frames.

Quality Control

1. Checking the raw material after they reach our factory----- Incoming quality control (IQC)
2. Checking the details before the production line operated
3. Have full inspection and routing inspection during mass production---In process quality control(IPQC)
4. Checking the goods after they are finished---- Final quality control(FQC)
5. Checking the goods after they are finished-----Outgoing quality control(OQC)

Why Choose Us

Our advantages

1. High Precision and Consistency:

The supplier's advanced stamping and bending processes enable the production of brackets with minimal tolerances, ensuring precise fit and functionality. This is crucial for medical equipment, where accuracy directly impacts patient safety and device performance.

Example: A surgical robot arm bracket with a tolerance of $\pm 0.01\text{mm}$ ensures smooth operation and reduces wear on components.

2. Material and Design Flexibility:

By offering a wide range of materials and customization options, the supplier can create brackets tailored to specific environmental conditions (e.g., sterilization resistance for medical use) or load requirements (e.g., heavy-duty industrial applications).

Example: A titanium bracket for a dental imaging device combines lightweight strength with biocompatibility, while a stainless-steel bracket for a factory automation system prioritizes durability and corrosion resistance.

3. Cost-Effective Custom Solutions:

The supplier's ability to streamline the manufacturing process through automation and efficient tooling reduces lead times and costs without compromising quality. This makes high-precision brackets accessible for both large-scale production runs and

small-batch prototyping.

Example: A medical device manufacturer can quickly iterate on bracket designs with fast turnaround times, accelerating time-to-market for new products.

Aluminum Material

Material:

Aluminum 5052

Aluminum 6061

Aluminum 6063 etc

Finish:

Anodic Oxidation

Polishing

Powder Coating

Spray Painting



Why Choose Us



Multiple Machines

5-Axis CNC & Imp Professional machines, skillful workers, machines, skillful
with accuracy of guarantee the quality and lead time. guarantee fast lead time



Strictly Confidential

We will protect the customers' design
and the customer can request a
confidentiality agreement



Quality Inspection

We have a strict quality inspection
process to ensure the quality of our
products

Factory Show

Factory Equipment



WEDM



Milling Machine



CNC Wire Cut



Coordinate measuring machine



CNC Bending Machine



Hydraulic Press Machine



SLS/SLA Machine



5-Axis CNC



CNC Lathe



Laser cutting Machine



CNC Punching Machine



Injection Molding machine



FAQ

Q: How can I customize my products ?

A: Please describe your project. Include the following information so that we can provide an accurate quote: Part Name, 3D CAD Drawing, Quantity, Material, Color, Finishing.

Q: How can I know my products going on ?

A: We will offer a detailed production schedule and send weekly reports with digital pictures and videos which show the production process.

Q: Can You sign a confidentiality greement ?

A: We can sign a confidentiality agreement according to your needs.

Q: What is your terms of payment ?

A: 30% in advance ,70% balance before shipment. Other terms negotiable.

Q: Are you a trading company or factory?

A: We are direct factory with 20 experienced engineers and more than 80 employees as well approximate 3,000 square meters workshop area.

Q: What shall we do if we do not have drawings?

A: Please send your sample to our factory,then we can copy or provide you better solutions. Please send us pictures or drafts with dimensions(Length, Height, Width), CAD or 3D file will be made for you if placed order.



Shenzhen Xianheng Technology Co.,Ltd

0086-13682614486

shawn@xianheng-tech.com

cnc-metalmachining.com

Room 8-1409, Xingji jiaoyuan building 8-9#, HongXing community, Songgang street, Bao'an District, Shenzhen
City China