



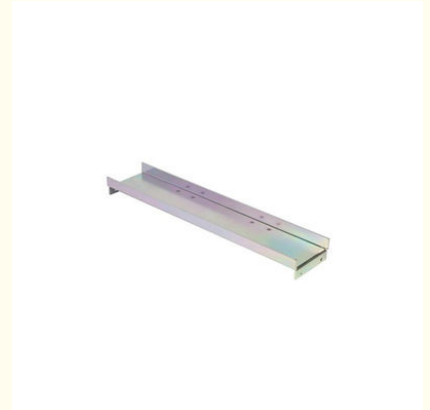
Industrial Commercial Consumer Metal Frame Parts Customized Welding Fabrication Bending Stamping for Various Applications

Our Product Introduction

for more products please visit us on cnc-metalmachining.com

Basic Information

- Place of Origin: Shenzhen China
- Brand Name: Xianheng
- Certification: ISO9001:2015
- Model Number: MFA-XG-067
- Minimum Order Quantity: 1 pcs
- Price: USD \$0.1-\$1.99
- Packaging Details: Carton, As Customers' packaging requirements
- Delivery Time: Samples 7-10 days, Mass production 20-25 days
- Payment Terms: T/T, Western Union, MoneyGram
- Supply Ability: 50000 pcs per week



Product Specification

- Supply Type: OEM Service
- Material Capabilities: Stainless Steel, Brass, Aluminum, Steel
- Process: Bending, Laser Cutting, Welding, Stamping
- Application: Auto, motorcycle, industry, agriculture, furniture, etc.
- Packing Details: Carton, Wooden Case, Plastic Cargo
- Color: Black, Silver, Customized Color
- Place Of Origin: China



More Images



Product Description

What We Can Provide

Industrial Commercial Consumer Metal Frame Parts Customized Welding Fabrication Bending Stamping for Various Applications

Description Of Industrial Commercial Consumer Metal Frame Parts Customized Welding Fabrication Bending Stamping for Various Applications

Fabrication encompasses a wide range of processes that transform raw metal materials into finished parts. This includes cutting, shaping, and assembling metal sheets, bars, and tubes according to specific design requirements. Fabrication techniques can be customized to meet the unique specifications of different applications, from large - scale industrial structures to intricate consumer product components.

Material Of Industrial Commercial Consumer Metal Frame Parts Customized Welding Fabrication Bending Stamping for Various Applications

Production Capability

Secondary Operations

Surface Operations	<ul style="list-style-type: none"> * Deburring work by machines, then by hands; * As long as you need no scratches on the products, we can use the film protected material for products during production; * Remove sharps of the products; * Ultrasonic cleaning after production.
Surface Treatments	Powder Coating, Polishing, Brushing, PVD Plating, PVC Coating, Ceramic Coating, Chrome Plating, Nickel Plating, Tin Plating, Copper Plating, Silver Plating, Sandblasting, Anodizing, Dacromet, Baking Varnish, Electrophoresis Coating, Zinc Plating, Hot Dip Galvanizing.
LOGO Printing	Laser Engraving, Silk-screening etc
Assembly Service	Yolanda provide products assembly service after each component production.
Custom Packaging	<ul style="list-style-type: none"> * Design packaging according to your products; * Make the packagings according to your requests; * Print your LOGO on the packaging as long as you need; * Other request according to your need.

Application Of Industrial Commercial Consumer Metal Frame Parts Customized Welding Fabrication Bending Stamping for Various Applications

1. Construction: Metal angle brackets are extensively used in the construction industry for connecting beams, joists, and rafters. They provide critical support and reinforcement to building structures, ensuring stability and load distribution.
2. Shelving: Angle brackets are widely used as shelf supports for wall-mounted shelves in homes, offices, retail stores, and warehouses. They help create sturdy and reliable shelving systems.
3. Furniture Assembly: Metal angle brackets are essential in furniture assembly, helping to connect components and reinforcing joints in tables, chairs, cabinets, and bed frames.

Quality Control

1. Checking the raw material after they reach our factory----- Incoming quality control (IQC)
2. Checking the details before the production line operated
3. Have full inspection and routing inspection during mass production---In process quality control(IPQC)
4. Checking the goods after they are finished---- Final quality control(FQC)
5. Checking the goods after they are finished-----Outgoing quality control(OQC)

Why Choose Us

Advantages

1. Customization to Meet Specific Needs

One of the most significant advantages of customized welding, fabrication, bending, and stamping is the ability to tailor metal frame parts to the exact requirements of different applications. Whether it's a unique size, shape, or material specification,

manufacturers can create parts that perfectly fit the intended use. This customization ensures optimal performance, functionality, and aesthetics, giving businesses and consumers products that meet their specific demands.

2. High Strength and Durability

Metal frame parts produced through these processes are known for their exceptional strength and durability. Welding creates strong joints, while the use of high - quality metals and precise fabrication techniques ensure that the parts can withstand heavy loads, harsh environmental conditions, and regular use. This longevity reduces the need for frequent replacements, saving costs in the long run and providing reliable performance in industrial, commercial, and consumer applications.

3. Cost - Effectiveness for Large - Scale Production

For applications that require large quantities of metal frame parts, processes like stamping offer significant cost advantages. Stamping is a highly automated and efficient manufacturing method that can produce parts at a high rate with minimal labor costs. Additionally, the ability to use standardized dies and processes reduces setup times and material waste, making it an economical choice for mass production.

4. Aesthetic Versatility

Metal frame parts can be designed and finished to meet a wide range of aesthetic requirements. Through bending and fabrication techniques, different shapes and forms can be created, while various surface treatments such as painting, powder coating, or anodizing can enhance the appearance of the parts. This aesthetic versatility allows manufacturers to produce metal frame parts that not only function well but also blend seamlessly with the overall design of industrial equipment, commercial products, or consumer goods, enhancing their market appeal.

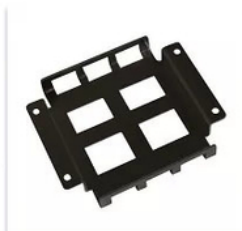
Aluminum Material

Material :

Aluminum 5052
Aluminum 6061
Aluminum 6063 etc

Finish :

Anodic Oxidation
Polishing
Powder Coating
Spray Painting



Why Choose Us



Multiple Machines

5-Axis CNC & Imp Professional machines, skillful workers, machines, skillful
with accuracy of guarantee the quality and lead time. guarantee fast lead time



Strictly Confidential

We will protect the customers' design
and the customer can request a
confidentiality agreement



Quality Inspection

We have a strict quality inspection
process to ensure the quality of our
products

Factory Show

Factory Equipment



WEDM



Milling Machine



CNC Wire Cut



Coordinate measuring machine



CNC Bending Machine



Hydraulic Press Machine



SLS/SLA Machine



5-Axis CNC



CNC Lathe



Laser cutting Machine



CNC Punching Machine



Injection Molding machine



FAQ

1. How can I get the price? - We usually quote within 24 hours after we get your inquiry (except weekend and holidays). If you are urgent to get the price, please email us or contact us in other ways so that we can offer you a quote.
2. Can I buy samples? - Yes. Please feel free to contact us.
3. What is your lead time? - It depends on the order quantity and the season you place the order. Usually we can ship within 7-15 days for small quantity, and about 30 days for large quantity.
4. What is your payment term? - T/T, Western Union, MoneyGram, and Paypal. This is negotiable.
5. What is the shipping method? - It could be shipped by sea, by air, or by express (EMS, UPS, DHL, TNT, FEDEX etc). Please confirm with us before placing orders.
6. How do you make our business long-term and good relationship? - We keep good quality and competitive price to ensure our customers benefit. Furthermore, we respect every customer as our friend and we sincerely do business and make friends with them, no matter where they come from.



Shenzhen Xianheng Technology Co.,Ltd

☎ 0086-13682614486

✉ shawn@xianheng-tech.com

🌐 cnc-metalmachining.com

Room 8-1409, Xingji jiayuan building 8-9#, HongXing community, Songgang street, Bao'an District, Shenzhen City China