



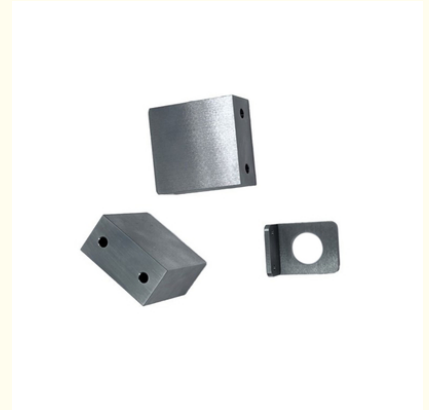
Stainless Steel CNC Parts Advanced CNC Technology for Custom Metal Solutions in Medical Device and Electronics Components

Our Product Introduction

for more products please visit us on cnc-metalmachining.com

Basic Information

- Place of Origin: Shenzhen China
- Brand Name: Xianheng
- Certification: ISO9001:2015
- Model Number: ST-CNC-080
- Minimum Order Quantity: 1 pcs
- Price: USD \$0.1-\$1.99
- Packaging Details: Carton, As Customers' packaging requirements
- Delivery Time: Samples 7-10 days, Mass production 20-25 days
- Payment Terms: T/T, Western Union, MoneyGram
- Supply Ability: 10000 pcs per week



Product Specification

- Cnc Machining Or Not: CNC Machining
- Type: Milling, Turning, Machining
- Material Capabilities: Copper, Aluminum, Bronze, Stainless Steel, Brass
- Surface Treatment: Anodized, Anodizing, Anodize/natural, Sandblast, Silk-screen
- Application: Machinery, Automotive, Laptop, Industrial Equipment, Engineering
- Tolerance: 0.01mm, 0.05 Mm, +/-0.005, 0.003-0.05mm
- Service: Customized OEM
- Keyword: Stainless Steel Milling Parts
- Quality Control: 100% Inspection Berore Shipment, 100% Full Inspection



More Images



Product Description

What We Can Provide

Stainless Steel CNC Parts Advanced CNC Technology for Custom Metal Solutions in Medical Device and Electronics Components

Description of Stainless Steel CNC Parts Advanced CNC Technology for Custom Metal Solutions in Medical Device and Electronics Components

CNC (Computer Numerical Control) machining has revolutionized the production of precision-engineered stainless steel parts, particularly in the medical device and electronics industries. By leveraging advanced CNC technology, manufacturers can achieve high precision, complex geometries, and superior surface finishes while maintaining biocompatibility, corrosion resistance, and durability—key requirements for medical and electronics applications.

Specification of Stainless Steel CNC Parts Advanced CNC Technology for Custom Metal Solutions in Medical Device and Electronics Components

Custom Metal Solutions

Candle Holders/Cups	Medical Containers	Metal End Covers	Mobile Phone Shells
Crafts Stamping Parts	Tablewares	Aluminum Lids	Cabinet Enclosures
Lighting Stamping Parts	Filters/Strainers	Cosmetic Caps	Furniture Accessories
Metal Brackets/Stand	Protective Shields	Essential Oil Caps	Door&Window Fittings
Electronic Components	Sheet Metal Panels	Perfume Caps	Shafts/Sleeves/Gears
Electrical Connections	Cooling Fins	Wine Bottle Caps	Fasteners
Metal Structures	Metal Contact Clips	Jar Caps	Machinery Parts
Car Spare Parts	Motor Spare Parts	Glass Bottle Caps	Pipe Fittings/Elbows

Application Of Advanced CNC Technology for Custom Metal Solutions in Stainless Steel CNC Parts for Medical Devices and Electronics

1. Auto Components Hardware Parts Auto Parts
2. Communication Equipment
3. Industrial Equipment
4. Medical EquipmentsMechanical Parts
5. Ship Accessories
6. Electrical Equipment
7. Mechanical Equipment

Quality Control

1. Checking the raw material after they reach our factory----- Incoming quality control (IQC)
2. Checking the details before the production line operated
3. Have full inspection and routing inspection during mass production---In process quality control(IPQC)
4. Checking the goods after they are finished---- Final quality control(FQC)
5. Checking the goods after they are finished-----Outgoing quality control(OQC)

Why Choose Us

Advantages

1. Unmatched Precision and Tolerance Control

Advanced CNC systems (e.g., 5-axis machining) achieve tolerances as tight as ± 0.001 mm, ensuring perfect fit and functionality in medical implants and electronic connectors.

Example: A CNC-machined stainless steel hip implant must meet exact dimensional requirements to avoid post-surgical complications.

2. Superior Material Compatibility and Surface Finish

Stainless steel (e.g., 316L, 17-4 PH) is ideal for medical and electronics applications due to its corrosion resistance, biocompatibility, and strength.

Advanced CNC machining allows for mirror-like surface finishes ($R_a < 0.1 \mu\text{m}$), reducing friction in moving parts and enhancing sterilization efficiency in medical tools.

Example: A CNC-polished stainless steel surgical instrument minimizes tissue damage during operations.

3. Rapid Prototyping and Customization

CNC technology enables fast turnaround times for prototyping and low-to-medium volume production, reducing development costs.

Customization: Medical devices often require patient-specific designs (e.g., personalized prosthetics). CNC machining allows for on-demand adjustments without expensive tooling changes.

Example: A CNC-machined dental implant can be tailored to a patient's unique jawbone structure in hours.

4. Cost-Effective Production with Minimal Waste

Unlike traditional manufacturing (e.g., casting, forging), CNC machining generates less material waste, lowering costs for high-value stainless steel.

Automation and Integration: Modern CNC systems integrate with CAD/CAM software, optimizing tool paths and reducing human error.

Example: A CNC-machined stainless steel electronics housing requires minimal post-processing, saving time and labor.

Factory Show

Factory Equipment



WEDM



Milling Machine



CNC Wire Cut



Coordinate measuring machine



CNC Bending Machine



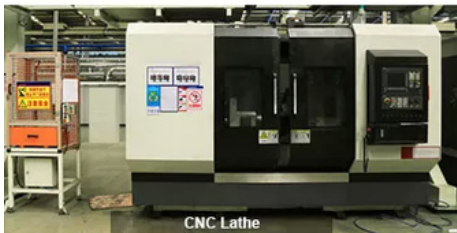
Hydraulic Press Machine



SLS/SLA Machine



5-Axis CNC



CNC Lathe



Laser cutting Machine



CNC Punching Machine



Injection Molding machine



FAQ

Q1: Where can I get product & price information?

A1: Send us inquiry e-mail, we will contact you as we receive your mail.

Q2: How long can I get the sample?

A2: Depends on your specific items, within 3-7 days is required generally.

Q3: What kinds of information you need for quote?

A3: Kindly please provide the product drawing in PDF, and will be better you can provide in STEP or IGS.

Q4: What are the payment terms?

A4: We accept 50% as payment deposit, when the goods is done, we take photos for your check and you then pay the balance.

Q5: Are you a trading company or factory?

A5: We are direct factory with 10 experienced engineers and more than 650 employees as well approximate 2,000 square ft. workshop area.

Q6: What shall we do if we do not have drawings?

A6: Please send your sample to our factory, then we can copy or provide you better solutions. Please send us pictures or drafts with dimensions (Length, Height, Width), CAD or 3D file will be made for you if placed order.





0086-13682614486



shawn@xianheng-tech.com



cnc-metalmachining.com

Room 8-1409, Xingji jiyuan building 8-9#, HongXing community, Songgang street, Bao'an District, Shenzhen
City China