



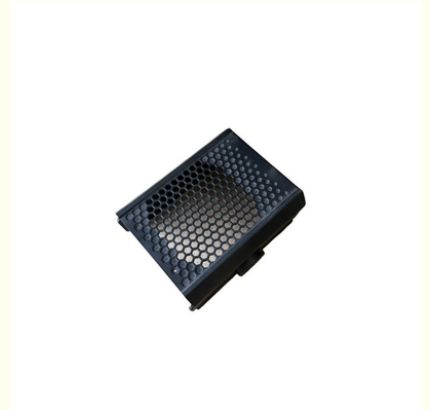
## Precision Sheet Metal Shell Fabrication for Medical Equipment with Customized Solutions and Biocompatible Materials

### Our Product Introduction

for more products please visit us on [cnc-metalmachining.com](http://cnc-metalmachining.com)

#### Basic Information

- Place of Origin: China
- Brand Name: Xiange
- Certification: ISO 9001:2015 SGS RoHS
- Model Number: MF-XG-36
- Minimum Order Quantity: 1 pcs
- Price: USD 1\$-2\$
- Packaging Details: Carton Wooden case
- Delivery Time: 5-8 days
- Payment Terms: T/T, Western Union, MoneyGram
- Supply Ability: 10 SET per week



#### Product Specification

- Material Capabilities: Stainless Steel, Aluminium, Copper, Brass
- Products: Metal Equipment Shell
- Process: Metal Sheets Fabrication, Welding Cutting Punching Stamping
- Application: Electronic Equipment Sheet Metal Shell, Custom Control Box Cabinet Chassis Shell
- OEM/ODM: Acceptable
- Equipment: Precision Nonstandard Parts
- Surface Treatment: Powder Coated, Hot Galvanized, Painting, Polishing, Spray Coating, Brushing, Cathaphoresis, Sandblasting, Electroplate Chrome/Zinc/Nickel Plating/Anodize/Electronic Polish, Silk-screen Etc;
- Package: Platic Bag ,Blister Box ,Tap Reel Or As Your Required
- Used: Computer, Telecom, mechical ,electronics, appliance, military, aerospace.



#### More Images



## Product Description

### What We Can Provide

#### Precision Sheet Metal Shell Fabrication for Medical Equipment with Customized Solutions and Biocompatible Materials

#### Description of Precision Sheet Metal Shell Fabrication for Medical Equipment with Customized Solutions and Biocompatible Materials

Precision sheet metal shell fabrication tailored for medical equipment represents a sophisticated manufacturing process that combines advanced technology, customized design, and the use of biocompatible materials. This approach is essential in creating enclosures and structural components that not only meet the stringent functional requirements of medical devices but also ensure patient safety and device longevity.

#### Specification of Precision Sheet Metal Shell Fabrication for Medical Equipment with Customized Solutions and Biocompatible Materials

Product	Custom Sheet Metal Fabrication Laser Cutting Bending Sheet Metal Stamping Parts
Material	Stainless Steel, Carbon Steel(Q235), Aluminum(6061,6063, 5052), Copper, Brass etc.
Process	Bending, Stamping, Welding
Finish	Zinc Plating, Mirror Polished, Brush Polished, Paint, Anodic Oxidation, Powder Coated
Package	Plywood Box + Plywood Pallet, Plywood Box
OEM Service	Accept

#### Quality Control

1. Checking the raw material after they reach our factory----- Incoming quality control ( IQC)
2. Checking the details before the production line operated
3. Have full inspection and routing inspection during mass production---In process quality control(IPQC)
4. Checking the goods after they are finished---- Final quality control(FQC)
5. Checking the goods after they are finished-----Outgoing quality control(OQC)

#### Application Of Precision Sheet Metal Shell Fabrication for Medical Equipment with Customized Solutions and Biocompatible Materials

1. Auto Components Hardware Parts Auto Parts
2. Communication Equipment
3. Industrial Equipment
4. Medical EquipmentsMechanical Parts
5. Ship Accessories
6. Electrical Equipment
7. Mechanical Equipment

### Why Choose Us

#### Key Elements of the Fabrication Process:

**Customized Design and Engineering:** Each medical device has unique specifications, necessitating a bespoke design approach. Precision sheet metal fabrication starts with detailed engineering drawings and 3D modeling, allowing for precise dimensions, tolerances, and features to be incorporated into the shell design. This ensures a perfect fit within the medical device and optimal performance.

**Advanced Manufacturing Techniques:** Utilizing state-of-the-art CNC (Computer Numerical Control) machining, laser cutting, and bending technologies, fabricators can achieve extremely high levels of precision and consistency. These techniques enable the creation of complex shapes and intricate details that are often required in medical equipment shells.

**Biocompatible Material Selection:** The choice of materials is critical in medical applications. Biocompatible metals such as titanium alloys, stainless steel (e.g., 316L), and certain medical-grade plastics are commonly used. These materials are selected for their ability to withstand sterilization processes, resist corrosion, and not elicit adverse biological reactions when in contact with the human body.

**Surface Treatment and Finishing:** To enhance the durability, aesthetic appeal, and biocompatibility of the sheet metal shells, various surface treatments are applied. These may include anodizing, passivation, electroplating, or the application of protective coatings that also facilitate easy cleaning and disinfection.



## Multiple Machines

5-Axis CNC & Imp Professional machines, skillful workers, machines, skillful  
with accuracy of guarantee the quality and lead time. guarantee fast lead time



## Strictly Confidential

We will protect the customers' design  
and the customer can request a  
confidentiality agreement



## Quality Inspection

We have a strict quality inspection  
process to ensure the quality of our  
products

## Stainless Steel Material

### Material:

Stainless Steel 201  
Stainless Steel 430  
Stainless Steel 304  
Stainless Steel 316

### Finish:

Mirror Polishing  
Brush Polishing  
Electro Polishing  
Vibration Polishing



## FAQ

**Q1: Where can I get product & price information?**

A1: Send us inquiry e-mail, we will contact you as we receive your mail.

**Q2: How long can I get the sample?**

A2: Depends on your specific items, within 3-7 days is required generally.

**Q3: What kinds of information you need for quote?**

A3: Kindly please provide the product drawing in PDF, and will be better you can provide in STEP or IGS.

**Q4: What are the payment terms?**

A4: We accept 50% as payment deposit, when the goods is done, we take photos for your check and you then pay the balance.

**Q5: Are you a trading company or factory?**

A5: We are direct factory with 10 experienced engineers and more than 650 employees as well approximate 2,000 square ft. workshop area.

**Q6: What shall we do if we do not have drawings?**

A6: Please send your sample to our factory, then we can copy or provide you better solutions. Please send us pictures or drafts with dimensions (Length, Height, Width), CAD or 3D file will be made for you if placed order.



**Shenzhen Xianheng Technology Co.,Ltd**

 0086-13682614486

 shawn@xianheng-tech.com

 cnc-metalmachining.com

Room 8-1409, Xingji jiayuan building 8-9#, HongXing community, Songgang street, Bao'an District, Shenzhen City China