



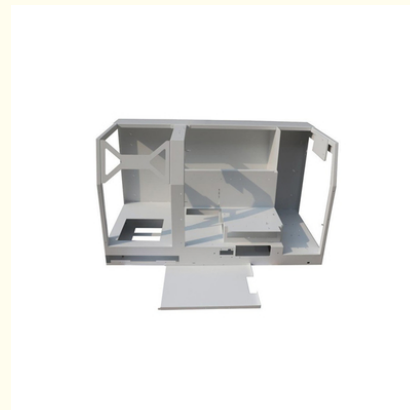
Professional Sheet Metal Shell Fabrication for Medical Equipment with Customized Solutions and Biocompatible Materials

Our Product Introduction

for more products please visit us on cnc-metalmachining.com

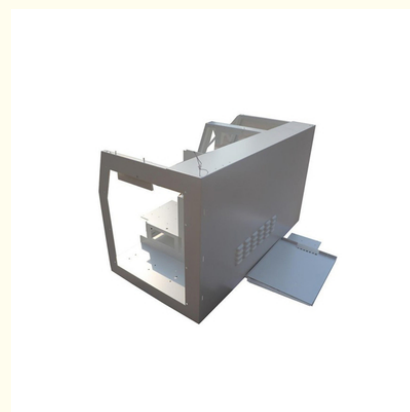
Basic Information

- Place of Origin: China
- Brand Name: Xiange
- Certification: ISO 9001:2015 SGS RoHS
- Model Number: MF-XG-37
- Minimum Order Quantity: 1 pcs
- Price: USD 1\$-2\$
- Packaging Details: Carton Wooden case
- Delivery Time: 5-8 days
- Payment Terms: T/T, Western Union, MoneyGram
- Supply Ability: 10 SET per week



Product Specification

- Material Capabilities: Stainless Steel, Aluminium, Copper, Brass
- Products: Metal Equipment Shell
- Process: Metal Sheets Fabrication, Welding Cutting Punching Stamping
- Application: Electronic Equipment Sheet Metal Shell, Custom Control Box Cabinet Chassis Shell
- OEM/ODM: Acceptable
- Equipment: Precision Nonstandard Parts
- Surface Treatment: Powder Coated, Hot Galvanized, Painting, Polishing, Spray Coating, Brushing, Cathaphoresis, Sandblasting, Electroplate Chrome/Zinc/Nickel Plating/Anodize/Electronic Polish, Silk-screen Etc;
- Package: Platic Bag ,Blister Box ,Tap Reel Or As Your Required
- Used: Computer, Telecom, mechical ,electronics, appliance, military, aerospace.



More Images



Product Description

What We Can Provide

Professional Sheet Metal Shell Fabrication for Medical Equipment with Customized Solutions and Biocompatible Materials

Description of Professional Sheet Metal Shell Fabrication for Medical Equipment with Customized Solutions and Biocompatible Materials

Medical equipment demands precision, durability, and strict compliance with hygiene and safety standards. Professional sheet metal shell fabrication tailored for medical devices integrates customized design, biocompatible materials, and advanced manufacturing techniques to meet these requirements.

Specification of Professional Sheet Metal Shell Fabrication for Medical Equipment with Customized Solutions and Biocompatible Materials

Product	Custom Sheet Metal Fabrication Laser Cutting Bending Sheet Metal Stamping Parts
Material	Stainless Steel, Carbon Steel(Q235), Aluminum(6061,6063, 5052), Copper, Brass etc.
Process	Bending, Stamping, Welding
Finish	Zinc Plating, Mirror Polished, Brush Polished, Paint, Anodic Oxidation, Powder Coated
Package	Plywood Box + Plywood Pallet, Plywood Box
OEM Service	Accept

Quality Control

1. Checking the raw material after they reach our factory----- Incoming quality control (IQC)
2. Checking the details before the production line operated
3. Have full inspection and routing inspection during mass production---In process quality control(IPQC)
4. Checking the goods after they are finished---- Final quality control(FQC)
5. Checking the goods after they are finished-----Outgoing quality control(OQC)

Application Of Professional Sheet Metal Shell Fabrication for Medical Equipment with Customized Solutions and Biocompatible Materials

1. Auto Components Hardware Parts Auto Parts
2. Communication Equipment
3. Industrial Equipment
4. Medical EquipmentsMechanical Parts
5. Ship Accessories
6. Electrical Equipment
7. Mechanical Equipment

Why Choose Us

Key Elements of the Fabrication Process:

Enhanced Patient Safety and Hygiene:

Biocompatible materials and seamless designs minimize the risk of allergic reactions, infections, or contamination. For example, silver ion-coated aluminum shells inhibit bacterial growth by up to 99% (tested against E. coli and S. aureus), ensuring sterile operation environments.

Durability and Longevity:

Medical-grade materials like 316L stainless steel resist corrosion from frequent exposure to alcohol, chlorine, and other disinfectants, extending the device's lifespan. Anodized aluminum shells withstand 500+ alcohol wipes without surface degradation, maintaining functionality in high-use settings like operating rooms.

Customization for Specific Medical Applications:

Tailored designs accommodate unique device requirements, such as foldable shells for portable ultrasound machines (reducing storage space by 50%) or modular compartments for anesthesia machines to separate drugs from electronics. Example: A layered shell for a large anesthesia machine isolates heat-sensitive drugs from the device's thermal output, ensuring stability during prolonged surgeries.

Cost-Effectiveness Through Reduced Maintenance:

High-precision fabrication reduces assembly errors, while durable materials lower replacement costs. A 2024 study found that medical devices with optimized sheet metal shells required 30% fewer repairs over five years compared to plastic-encased alternatives, due to superior impact resistance and thermal stability.



Multiple Machines

5-Axis CNC & Imp Professional machines, skillful workers, machines, skillful
With accuracy of guarantee the quality and lead time. guarantee fast lead time



Strictly Confidential

We will protect the customers' design
and the customer can request a
confidentiality agreement



Quality Inspection

We have a strict quality inspection
process to ensure the quality of our
products

Stainless Steel Material

Material:

Stainless Steel 201
Stainless Steel 430
Stainless Steel 304
Stainless Steel 316

Finish:

Mirror Polishing
Brush Polishing
Electro Polishing
Vibration Polishing



FAQ

Q1: Where can I get product & price information?

A1: Send us inquiry e-mail, we will contact you as we receive your mail.

Q2: How long can I get the sample?

A2: Depends on your specific items, within 3-7 days is required generally.

Q3: What kinds of information you need for quote?

A3: Kindly please provide the product drawing in PDF, and will be better you can provide in STEP or IGS.

Q4: What are the payment terms?

A4: We accept 50% as payment deposit, when the goods is done, we take photos for your check and you then pay the balance.

Q5: Are you a trading company or factory?


A5: We are direct factory with 10 experienced engineers and more than 650 employees as well approximate 2,000 square ft. workshop area.

Q6: What shall we do if we do not have drawings?


A6: Please send your sample to our factory, then we can copy or provide you better solutions. Please send us pictures or drafts with dimensions (Length, Height, Width), CAD or 3D file will be made for you if placed order.



Shenzhen Xianheng Technology Co.,Ltd

 0086-13682614486

 shawn@xianheng-tech.com

 cnc-metalmachining.com

Room 8-1409, Xingji jiayuan building 8-9#, HongXing community, Songgang street, Bao'an District, Shenzhen City China